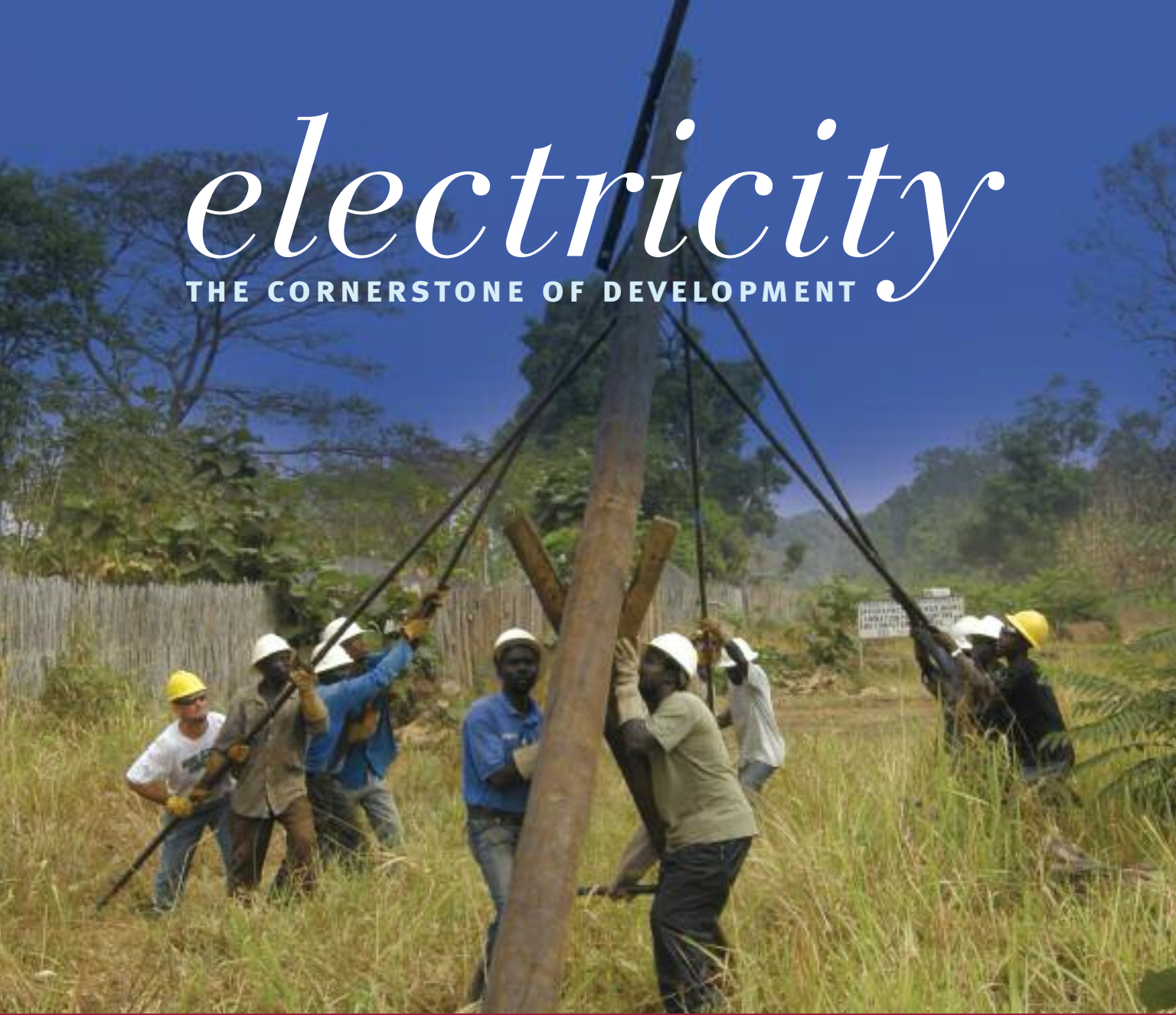




electricity

THE CORNERSTONE OF DEVELOPMENT



VOLUNTEERS IN ACTION *sudan and beyond*

NRECA INTERNATIONAL PROGRAMS



NRECA International Programs

Your Touchstone Energy® Partner





N

RECA International, Ltd., a wholly owned subsidiary of the National Rural Electric Cooperative Association, stands at the forefront of rural electrification around the world. For more than 40 years, we have *provided developing countries access to safe, reliable and affordable electricity*, sharing lessons from the U.S. electric cooperative experience along the way. Wherever we design, construct and operate rural electric utilities, we also build local institutional capacity—including the training of personnel—to own and manage them.

The NRECA International Foundation is the charitable organization owned by NRECA and helps bring electricity and its inherent benefits to the people of rural areas in developing countries. Through the Foundation, U.S. co-ops help bring hope and the opportunity to help families in developing countries to become healthy, productive, and self-reliant through access to reliable electricity. The U.S. co-ops participate by *volunteering their skills, donating used vehicles and electric equipment, and providing funding.*

Being a volunteer often means...

...making certain sacrifices in order to help others. But the linemen who support NRECA International take volunteering to another level. They leave their families behind and fly to far-off countries for the opportunity to make a significant difference in the lives of some of the world's most needy people.

The tiny town of Yei (pronounced Yay) in Southern Sudan was once a bustling market city. But decades of civil war destroyed its infrastructure and people fled to other countries, becoming refugees. Following a 2005 peace accord, the U.S. Agency for International Development commissioned NRECA International to help build a new electrical system for the town.

Over the next three years, some 15 U.S. co-op linemen descended into Yei to give its war-wearied people a ray of hope. By May of 2008, a completed electric system, with a powerhouse, streetlights, and some 15 miles of overhead line, was turned over to the Yei Electricity Cooperative (YECO).

An estimated 17,500 Yei residents now benefit from access to electric power. The city's after-dark crime rates have plummeted, and business development and population numbers are soaring.

"It's really nice to know that you've kind of made a difference and helped out in so many people's lives," said volunteer lineman Jimmy Goodnight, from Boone Electric Cooperative in Columbia, Missouri. "I would tell any lineman that it's tough, but it's probably the most rewarding thing they'll do in their career."



INTO THE LIGHT: *sudan volunteers in action*



The 15 volunteers who traveled to Sudan to help build Yei Electricity Cooperative made an indelible mark on the effort, helping to:

- Allow 17,500 people to benefit from reliable, affordable electricity
- Construct about 15 miles of power line
- Provide electricity to homes, health centers, schools and streets
- Create an organization that employs almost 20 people

“It was hard work and physically demanding, but I loved it. That’s why I went back. We all got so much satisfaction out of helping others. **It was gratifying to watch people literally light up and to know that we really made a difference.** It’s what the cooperative model is all about.”

WILLY MILNER, foreman, Wyrulec

Two-time NRECA International Volunteer in Sudan



VOLUNTEERS SPEAK OUT ABOUT *NRECA International Projects*

In addition to Sudan, NRECA International volunteers have traveled to Guatemala, Yemen, and beyond—a total of seven countries in 2008. Since NRECA International programs were established in 1942, the organization has helped 100 million people in 42 countries gain access to electricity—with much of the work being completed by volunteers, and supported by donors.



The experience is priceless for the volunteer.

“My experience in Haiti was life-altering. Meeting the people and being a part of something that has the potential to enrich the quality of their lives was amazing. It is difficult to explain the fire this project lit within me.”

GWEN THOMAS, senior vice president, East Central Energy
NRECA International Volunteer in Haiti

“It was a real experience to see people so thrilled to get lights in their houses, because we take it for granted. I wouldn’t have traded the experience for anything in the world. **I think everyone deserves the chance to see the lights come on for the first time.**”

KEITH KIRK, lineman, Walton EMC
NRECA International Volunteer in Guatemala



OVERSEAS VOLUNTEERS 2008

COSTA RICA

Chris Stephens, Coweta-Fayette EMC (GA)
Jay Grove, Adams Electric Cooperative, Inc. (PA)
Lanny Hammett, Coweta-Fayette EMC (GA)
Ronald Plank, Adams Electric Cooperative, Inc. (PA)
Steven Rasmussen, Adams Electric Cooperative, Inc. (PA)

GLOBAL

J. Paul Dow, Assn. of Illinois Electric Co-ops (IL)

GUATEMALA

Chris Stephens, Coweta-Fayette EMC (GA)

Craig Carlan, Habersham EMC (GA)
Curtis Baker, Coweta-Fayette EMC (GA)
Dale Anderson, Kandiyohi Power Cooperative (MN)
David Gainous, Grady EMC (GA)
David George, Kandiyohi Power Cooperative (MN)
David Nelson, Kandiyohi Power Cooperative (MN)
Erik Hansek, GreyStone Power Corporation (GA)
Jason Carey, Jackson EMC (GA)
Jody Hand, Coweta-Fayette EMC (GA)
Joey Thompson, Jackson EMC (GA)

Justin Harrison, Grady EMC (GA)
Keith Kirk, Walton EMC (GA)
Larry Moore, Kandiyohi Power Cooperative (MN)
Phillip Hogan, Habersham EMC (GA)
Ronnie Browning, Walton EMC (GA)
Tom Jackson, Utility Support Systems, Inc. (GA)
Travis Duren, Grady EMC (GA)
Troy Mead, Kandiyohi Power Cooperative (MN)

HAITI

Bruce Giffin, Illinois Rural Electric Cooperative (IL)

Christopher Bechthold, BENCO Electric Cooperative (MN)
Clint Olson, Renville-Sibley Cooperative Power Assn. (MN)
Gwen Thomas, East Central Energy (MN)
James Cullen, Minnesota Valley Electric Cooperative (MN)
Jeffrey Langeberg, Minnesota Valley Electric Cooperative (MN)
Jeremy Denzer, Minnesota Valley Electric Cooperative (MN)
Joseph Jutz, Minnesota Valley Electric Cooperative (MN)

Larry Soukup, Brown County REA (MN)
Michael Callies, Minnesota Valley Electric Cooperative (MO)
Robert Fenner, Minnesota Valley Electric Cooperative (MN)

PHILIPPINES

Arthur Cordoba, Kauai Island Utility Cooperative (HI)
Bradly Martin, Wood County Electric Co-op, Inc. (TX)
Chuck Baucum, Wood County Electric Co-op, Inc. (TX)
Ferdinand Pascual, Kauai Island Utility

Cooperative (HI)
Peter Yukimura, Kauai Island Utility Cooperative (HI)
Travis Housley, Big Rivers Electric Corporation (KY)

RWANDA

Alain Harelimana, Delaware County Electric Cooperative, Inc. (NY)

SUDAN

Craig Larkin, Cuivre River Electric Co-op, Inc. (MO)
Danny Brown, Macon Electric Cooperative (MO)
James Conrow, Boone Electric Co-op (MO)

Jimmy Goodnight, Boone Electric Co-op (MO)
Karl Brandt, Gascoage Electric Cooperative (MO)
Mark Ziegler, Cuivre River Electric Co-op, Inc. (MO)
Robert Ball, Valley Electric Association (NV)
Ronald Schwartzau, Nobles Cooperative Electric (MN)
Steven Baumgartner, Boone Electric Co-op (MO)
Willard Milner, Wyrulec Company, (WY)

YEMEN

Robert Kraft, Independent Volunteer (NC)

HONOR ROLL 2008

CALENDAR YEAR

MONETARY CONTRIBUTION LEVELS

| | | | |
|---------------------|----------------------|-------------------|--------------------|
| Global Partner | \$25,000 and above | National Partner | \$2,500 to \$4,999 |
| Continental Partner | \$10,000 to \$24,999 | Village Partner | \$1,000 to \$2,499 |
| Regional Partner | \$5,000 to \$9,000 | Community Partner | \$500 to \$999 |

GLOBAL PARTNERS

CoBank, Denver, CO
East Central Energy, Braham, MN
Interstate Utility Service, Willmar, MN
National Co-op Services Corp., Herndon, VA
Umatilla Electric Cooperative, Hermiston, OR

CONTINENTAL PARTNERS

Bell Lumber & Pole Company, New Brighton, MN
Big Rivers Electric Corporation, Henderson, KY
Buckeye Power, Inc., Columbus, OH
Great River Energy, Maple Grove, MN

REGIONAL PARTNERS

Connexus Energy, Ramsey, MN
Coweta-Fayette EMC, Palmetto, GA
Kauai Island Utility Cooperative, Lihue, HI
Minnesota Valley Electric Cooperative, Jordan, MN
URADCO, Dade City, FL
Wright-Hennepin Cooperative Electric Assn., Rockford, MN

NATIONAL PARTNERS

Anza Electric Co-op, Inc., Anza, CA
Asplundh Tree Expert Company, Willow Grove, PA
Assn. of Missouri Electric Co-ops, Jefferson City, MO
Basin Electric Power Cooperative, Bismarck, ND
Butler REC, Inc., El Dorado, KS
Butler REC, Inc., Oxford, OH
Carteret-Craven Electric Co-op, Newport, NC
Central Electric Power Cooperative, Jefferson City, MO
Federated RE Insurance Exchange, Lenexa, KS
Flathead Electric Cooperative, Inc., Kalispell, MT
Garkane Energy Cooperative, Inc., Loa, UT
GRESKO, Forsyth, GA
Habersham EMC, Clarkesville, GA
Intermountain REA, Sedalia, CO
Mid-South Synergy, Navasota, TX
Nueces Electric Cooperative, Inc., Robstown, TX
Pike Electric, Inc., Mount Airy, NC
Pioneer Electric Cooperative, Inc., Ulysses, KS
ProCore Solutions, LLC, Marietta, GA
Singing River Electric Power Assn., Lucedale, MS
Sioux Valley Energy, Colman, SD
Tri-County EMC, Gray, GA

United Cooperative Services, Inc., Cleburne, TX
Utility Support Systems, Inc., Douglasville, GA
Walton EMC, Monroe, GA
White River Valley Electric Cooperative, Branson, MO
Wind Capital Group, LLC, Saint Louis, MO

VILLAGE PARTNERS

Adams Electric Cooperative, Inc., Gettysburg, PA
Adams-Columbia Electric Co-op, Friendship, WI
Aiken Electric Cooperative, Inc., Aiken, SC
Allamakee-Clayton Elec. Co-op, Inc., Postville, IA
Arkansas Valley Electric Cooperative Corp., Ozark, AR
Associated Electric Co-op, Inc., Springfield, MO
Barron Electric Cooperative, Barron, WI
Benton Rural Electric Assn, Prosser, WA
Blue Ridge EMC, Lenoir, NC
Boone Electric Co-op, Columbia, MO
Carroll EMC, Carrollton, GA
Central Electric Power Association, Carthage, MS
Central Georgia EMC, Jackson, GA
Central Wisconsin Electric Cooperative, Iola, WI
Clark County REMC, Sellersburg, IN
Clearwater-Polk Electric Cooperative, Bagley, MN
Cooke County Electric Co-op Assn., Muenster, TX
Crow Wing Co-op Power & Light Co., Brainerd, MN
Dairyland Power Cooperative, La Crosse, WI
Dakota Electric Association, Farmington, MN
DaVita, Tacoma, WA
Delaware Electric Cooperative, Inc., Greenwood, DE
Diverse Power Incorporated, Lagrange, GA
Dubois REC, Inc., Jasper, IN
Duck River Electric Membership Corp, Shelbyville, TN
East Central Oklahoma Electric Cooperative, Inc., Okmulgee, OK
Electric Cooperatives of S.C., Inc., Cayce, SC
Fall River Rural Electric Cooperative, Inc., Ashton, ID
Federated REA, Jackson, MN
Flint EMC, Reynolds, GA

Freeborn-Mower Co-op Services, Albert Lea, MN
Georgia EMC, Tucker, GA
Georgia System Operations Corp., Tucker, GA
Georgia Transmission Corporation, Tucker, GA
Golden Valley Electric Association, Inc., Fairbanks, AK
Grand Valley Rural Power Lines, Inc., Grand Junction, CO
GreyStone Power Corporation, Douglasville, GA
Guernsey-Muskingum Electric Co-op, Inc., New Concord, OH
HD Supply Utilities, Wake Forest, NC
HILCO Electric Cooperative, Inc., Itasca, TX
Illinois Rural Electric Cooperative, Winchester, IL
Iowa Assn. of Electric Co-ops, Des Moines, IA
Irwin EMC, Ocilla, GA
Jackson County REMC, Brownstown, IN
Kankakee Valley REMC, Wanatah, IN
Kansas Electric Co-ops, Inc., Topeka, KS
La Plata Electric Association, Inc., Durango, CO
Laclede Electric Co-op, Lebanon, MO
Lake Country Power, Grand Rapids, MN
Lower Yellowstone REA, Inc., Sidney, MT
Magic Valley Electric Cooperative, Inc., Mercedes, TX
McLeod Cooperative Power Assn., Glencoe, MN
Meade County RECC, Brandenburg, KY
Metropolitan Life Insurance Co., New York, NY
Mid-Carolina Electric Cooperative, Inc., Lexington, SC
Mille Lacs Energy Cooperative, Aitkin, MN
Minnesota Rural Electric Assn., Maple Grove, MN
Monroe County Electric Cooperative, Inc., Waterloo, IL
Naknek Electric Assn., Inc., Naknek, AK
Nebraska Rural Electric Assn., Lincoln, NE
Nobles Cooperative Electric, Worthington, MN
Nolin RECC, Elizabethtown, KY
North Dakota Association of REC's, Mandan, ND

Northeast Missouri Elec. Power Co-op, Palmyra, MO
Oconee EMC, Dudley, GA
Oglethorpe Power Corporation, Tucker, GA
Oklahoma Assn. of Electric Co-op's, Oklahoma City, OK
Orange County REMC, Orleans, IN
Partner Software, Inc., Athens, GA
Peace River Electric Cooperative, Inc., Wauchula, FL
Pee Dee EMC, Wadesboro, NC
Polk-Burnett Electric Cooperative, Centuria, WI
Roanoke Electric Cooperative, Rich Square, NC
Rock Energy Cooperative, Janesville, WI
Sawnee EMC, Cumming, GA
Sho-Me Power Electric Cooperative, Marshfield, MO
Snapping Shoals EMC, Covington, GA
Solomon Corporation, Solomon, KS
South Central Power Co., Lancaster, OH
Southern Rivers Energy, Barnesville, GA
Southwest Arkansas Electric Cooperative Corp., Texarkana, AR
Steele-Waseca Cooperative Electric, Owatonna, MN
Sulphur Springs Valley Electric Cooperative, Inc., Willcox, AZ
Sumter EMC, Americus, GA
Sunflower Electric Power Corp., Hays, KS
United Electric Cooperative, Heyburn, ID
Upshur-Rural Electric Cooperative Corporation, Gilmer, TX
Valley REC, Inc., Huntingdon, PA
Verendrye Electric Cooperative, Inc., Velve, ND
Wells REC, Wells, NV
West Kentucky RECC, Mayfield, KY
White River Electric Assn., Inc., Meeker, CO

COMMUNITY PARTNERS

ACES Power Marketing, Carmel, IN
Alfalfa Electric Cooperative, Inc., Cherokee, OK
ALMA Telephone Company, Inc., Alma, GA
American Coalition for Clean Coal Electricity, Alexandria, VA
Arrowhead Electric Cooperative, Inc., Lutsen, MN
Barrow Utilities & Electric Co-op, Barrow, AK
Bartholomew County REMC, Columbus, IN

Barton County Electric Co-op, Inc., Lamar, MO
BENCO Electric Cooperative, Mankato, MN
Big Bend Electric Cooperative, Inc., Ritzville, WA
Black River Electric Cooperative, Fredericktown, MO
Blue Ridge Mountain EMC, Young Harris, GA
Bon Homme Yankton Electric Assn. Inc., Tabor, SD
Bridger Valley Electric Assn., Inc., Mountain View, WY
Caney Fork Electric Cooperative, Inc., Mc Minnville, TN
Carroll Electric Cooperative, Inc., Carrollton, OH
Central Electric Cooperative, Inc., Parker, PA
Cherryland Electric Cooperative, Grawn, MI
Choptank Electric Co-op, Inc., Denton, MD
Clarke-Washington EMC, Jackson, AL
Coast Electric Power Association, Bay Saint Louis, MS
Coastal Electric Cooperative, Inc., Walterboro, SC
Cobb Electric Membership Corporation, Marietta, GA
Cobb Energy Management, Marietta, GA
Co-Mo Electric Cooperative, Inc., Tipton, MO
Consolidated Electric Cooperative, Inc., Mount Gilead, OH
Consumers Power, Inc., Philomath, OR
Co-op Light & Power Association, Two Harbors, MN
Corn Belt Energy Corporation, Bloomington, IL
Crawford Electric Cooperative, Inc., Bourbon, MO
Cullman Electric Cooperative, Cullman, AL
Cumberland Valley Electric, Inc., Gray, KY
CVS Caremark Corporation, Philadelphia, PA
Dakota Energy Cooperative, Inc., Huron, SD
Dawson PPD, Lexington, NE
Deaf Smith Electric Cooperative, Inc., Hereford, TX
Deseret G&T, South Jordan, UT
Dixie Electric Power Association, Laurel, MS
Dixie-Escalante Rural Electric Association, Inc., Beryl, UT
Dorsey & Whitney LLP, Minneapolis, MN

East River Electric Power Cooperative, Inc., Madison, SD
Eastern Illini Electric Cooperative, Paxton, IL
Eastern Iowa Light & Power Cooperative, Wilton, IA
Edgcombe-Martin County EMC, Tarboro, NC
Farmers Electric Co-op, Inc., Greenville, TX
Fort Loudoun Electric Co-op, Vonore, TN
Four County EMC, Burgaw, NC
Gascosage Electric Cooperative, Dixon, MO
General Pacific, Inc., Portland, OR
Gibson EMC, Trenton, TN
Grady EMC, Cairo, GA
Hamilton County Electric Co-op Assn., Hamilton, TX
Heart of Texas Electric Cooperative, McGregor, TX
Heartland Power Cooperative, Thompson, IA
Heartland REC, Girard, KS
Hill County Electric Cooperative, Inc., Havre, MT
HomeWorks Tri-County Electric Co-op, Inc., Portland, MI
Hoosier Energy REC, Inc., Bloomington, IN
Horry Electric Cooperative, Inc., Conway, SC
Howard Electric Cooperative, Fayette, MO
Indiana Statewide Assn. of REC, Indianapolis, IN
Inductive Components Mfg., Inc.-ICMI, Amelia, OH
Insurance Network of America, Giddings, TX
Intercounty Electric Cooperative Assn., Licking, MO
Inter-County Energy Cooperative Corp., Danville, KY
Itasca-Mantrap Co-op Electrical Assn., Park Rapids, MN
Jackson Electric Cooperative, Black River Falls, WI
Jo-Carroll Energy, Inc., Elizabeth, IL
KBR Rural Public Power District, Ainsworth, NE
Kentucky Assn. of Elec. Co-ops, Louisville, KY
Kotzebue Electric Association, Inc., Kotzebue, AK
Lane Electric Cooperative, Inc., Eugene, OR
Lost River Electric Cooperative, Inc., Mackay, ID
Lumbee River EMC, Red Springs, NC
M & A Electric Power Cooperative, Poplar Bluff, MO

Marlboro Electric Cooperative, Inc., Bennettsville, SC
Marshall & Lueder, LLC, Atlanta, GA
Meadow Spring Community Church, Shakopee, MN
Michigan Electric Co-op Assn., Okemos, MI
Midstate Electric Cooperative, Inc., La Pine, OR
Midwest Electric, Inc., Saint Marys, OH
Midwest Energy Cooperative, Cassopolis, MI
Midwest Energy, Inc., Hays, KS
Miller, Balis & O'Neil, P.C., Washington, DC
Milsoft Utility Solutions, Inc., Abilene, TX
Missouri REC, Palmyra, MO
Moloney Electric, Inc., Toronto, ON
Moon Lake Electric Association, Inc., Roosevelt, UT
Mountrail-Williams Electric Cooperative, Williston, ND
Navarro County Electric Co-op, Inc., Corsicana, TX
New Hampshire Electric Co-op, Plymouth, NH
North Carolina EMC, Raleigh, NC
North Georgia EMC, Dalton, GA
Northeastern REMC, Columbia City, IN
Northern Electric Cooperative, Inc., Bath, SD
Northwestern Electric Cooperative, Inc., Woodward, OK
Northwestern RECA, Inc., Cambridge Springs, PA
NW Electric Power Cooperative, Inc., Cameron, MO
Oakdale Electric Cooperative, Oakdale, WI
Ohio REC, Inc., Columbus, OH
Oregon Trail Elec. Consumers Co-op, Baker City, OR
Osage Valley Electric Co-op Assn., Butler, MO
Ozark Electric Co-op, Mount Vernon, MO
Panola-Harrison Electric Cooperative, Inc., Marshall, TX
Pataula EMC, Cuthbert, GA
Paulding-Putnam Electric Co-op, Inc., Paulding, OH
People's Electric Cooperative, Ada, OK
Piedmont EMC, Hillsborough, NC
Pioneer REC, Inc., Piqua, OH
Planters EMC, Millen, GA
Plumas Community Foundation, Quincy, CA
Poudre Valley REA, Inc., Fort Collins, CO

PowerSouth Energy Cooperative, Andalusia, AL
Rappahannock Electric Cooperative, Fredericksburg, VA
Red Lake Electric Cooperative, Inc., Red Lake Falls, MN
Red River Valley Co-op Power Assn., Halstad, MN
Renville-Sibley Cooperative Power Assn., Danube, MN
Sac Osage Electric Cooperative, Inc., El Dorado Springs, MO
San Isabel Electric Assn., Inc., Pueblo, CO
Santee Electric Cooperative, Inc., Kingstree, SC
Satilla REMC, Alma, GA
Se-Ma-No Electric Co-op, Mansfield, MO
Shelby Electric Cooperative, Shelbyville, IL
Slope Electric Cooperative, Inc., New England, ND
South Kentucky RECC, Somerset, KY
South Louisiana Electric Co-op Assn., Houma, LA
SouthEastern Illinois Elec. Co-op, Inc., Eldorado, IL
Southern Pine Electric Co-op, Brewton, AL
Southside Electric Cooperative, Crewe, VA
Southwest Mississippi EPA, Lorman, MS
Southwest Tennessee EMC, Brownsville, TN
Southwire Company, Carrollton, GA
Sumter Electric Cooperative, Inc., Sumterville, FL
Sussex REC, Sussex, NJ
Swisher Electric Cooperative, Inc., Tulia, TX
Tanner Electric Cooperative, North Bend, WA
Taylor County RECC, Campbellsville, KY
Taylor Electric Cooperative, Inc., Merkel, TX
Three Rivers Electric Co-op, Linn, MO
Tri-County Electric Cooperative, Rushford, MN
Tri-County Electric Cooperative, Inc., Azle, TX
Tri-State EMC, Mc Caysville, GA
Union REC, Inc., Marysville, OH
United Electric Cooperative, Inc., Du Bois, PA
Upper Missouri G&T Electric Co-op, Sidney, MT
Utilities District of Western Indiana REMC, Bloomfield, IN

VA., MD. & DEL. Assn. of Elec Co-op, Glen Allen, VA
Washington EMC, Sandersville, GA
Washington-St. Tammany Elec. Co-op, Franklinton, LA
Webster Electric Co-op, Marshfield, MO
Webster Technologies, Marshfield, MO
Wheat Belt PPD, Sidney, NE
Wild Rice Electric Cooperative, Inc., Mahanomen, MN
Wise Electric Cooperative, Inc., Decatur, TX

CERTIFICATES OF APPRECIATION

Assn. of Louisiana Electric Co-ops, Baton Rouge, LA
Border States Electric Supply, Fargo, ND
Brown County REA, Sleepy Eye, MN
Cavalier REC, Inc., Langdon, ND
Central Missouri Electric Cooperative, Sedalia, MO
Chariton Valley Electric Co-op, Inc., Albia, IA
Chippewa Valley Electric Cooperative, Cornell, WI
Clay-Union Electric Corporation, Vermillion, SD
Colorado REA, Denver, CO
Consolidated Electric Co-op, Mexico, MO
Hancock-Wood Electric Co-op, Inc., North Baltimore, OH
Humboldt County REC, Humboldt, IA
Lewis County REC, Lewistown, MO
Lyon-Lincoln Electric Cooperative, Inc., Tyler, MN
Macon Electric Cooperative, Macon, MO
Mt. Wheeler Power, Inc., Ely, NV
New-Mac Electric Cooperative, Inc., Neosho, MO
Okefenokee REMC, Nahunta, GA
Price Electric Cooperative, Phillips, WI
Redwood Electric Cooperative, Clements, MN
South Dakota REA, Pierre, SD
Southern Iowa Electric Co-op, Inc., Bloomfield, IA
Tri-County Electric Cooperative, Inc., Saint Matthews, SC
United Electric Cooperative, Maryville, MO
United Methodist Church, Cordell, OK
Wyrulec Company, Lingle, WY

IN-KIND DONATIONS

Donors of Equipments, Materials and Vehicles
Adams Electric Cooperative, Inc., Gettysburg, PA
Anza Electric Co-op, Inc., Anza, CA
Big Rivers Electric Corporation, Henderson, KY
Boone Electric Co-op, Columbia, MO
Clay-Union Electric Corporation, Vermillion, SD
East Central Energy, Braham, MN
Electrical Sales Engineering, Inc., Bowling Green, KY
Gascosage Electric Cooperative, Dixon, MO
Jackson Electric Cooperative, Mc Kee, KY
Kenergy Corp, Henderson, KY
Meade County RECC, Brandenburg, KY
Minnesota Valley Electric Cooperative, Jordan, MN
NRECA, Arlington, VA
Pioneer Electric Cooperative, Greenville, AL
Sauber Manufacturing, Co., Virgil, IL
Shelby Energy Cooperative, Shelbyville, KY
Valley Electric Association, Pahrump, NV
Watthour Engineering Co., Inc., Jackson, MS
Wood County Electric Co-op, Inc., Quitman, TX

U.S. CO-OP HOSTS AND SPECIAL EVENTS

Adams Electric Cooperative, Inc., Gettysburg, PA
Coweta-Fayette EMC, Palmetto, GA
Somerset REC, Inc., Somerset, PA
South Louisiana Electric Co-op Assn., Houma, LA

OTHER DONATIONS

Adams Electric Cooperative, Inc., Gettysburg, PA
Big Rivers Electric Corporation, Henderson, KY
Coweta-Fayette EMC, Palmetto, GA
East Central Energy, Braham, MN
Illinois Rural Electric Cooperative, Winchester, IL
Kauai Island Utility Cooperative, Lihue, HI
South Louisiana Electric Co-op Assn., Houma, LA

GET INVOLVED:

how to support the NRECA International Foundation

GIFT OF LIGHT FUNDRAISING CAMPAIGN

A workplace donation campaign that allows employees to donate by payroll deduction. By hosting this fundraiser at your workplace (co-op), you will help bring power to rural villages in developing nations. Are you ready to host a campaign, or do you have more questions? Just contact us by e-mail at InternationalPrograms@nreca.coop or call us at 703.907.5629.

DONATE EQUIPMENT AND VEHICLES

Much of the electrical equipment and materials that are retired in the U.S. still have many years of useful life. By donating these materials, we can help lower the costs of new construction. It's an easy way to make a difference in the life of a village! Learn what types of equipment and vehicles can be used overseas. To find out how you can make a donation, e-mail us at InternationalPrograms@nreca.coop or call 703.907.5629.

VOLUNTEER OVERSEAS

When people care, they can make great things happen. NRECA Foundation volunteers show they care by taking action and going overseas to help. They have made a positive impact in the lives of many, by bringing power to villages and hope to generations of men, women and children.

These are no vacation destinations—it's a lot of hard work and sweat, with no hot showers at the end of the day! Do you have what it takes? Read volunteer stories at www.nrecafoundation.coop, and select "Meet Our Volunteers." You can also apply online at: <http://www.nrecainternational.org/foundation/GetInvolved/Forms/VolunteerForm.htm>

